



# JDViewer Release Notes

## Version 6.4

### Document#:

Welcome to release 6.4 of JDViewer. This document provides version numbers, a description of new features, and a list of unresolved issues associated with this release.

# Software Version Number

JDViewer	6.4
----------	-----

## Introduction

JDViewer is a dedicated Application Software for CellAdvisor applicable for managing and analyzing the measurement data or editing the built-in table and scenario.

## Supported Model

JDViewer supports below models. Some of the functions are limited per each model. Please refer to Basic Operation section for more details.

- JD723A, JD725A, JD724B, JD723C, JD724C, JD725C, JD726C
- JD7105B, JD7108B
- JD745A, JD746A, JD748A, JD745B, JD746B, JD748B
- JD785A, JD786A, JD787A, JD785B, JD786B, JD787B
- DS9000 series
- CA5000 CellAdvisor 5G
- OneAdvisor-800

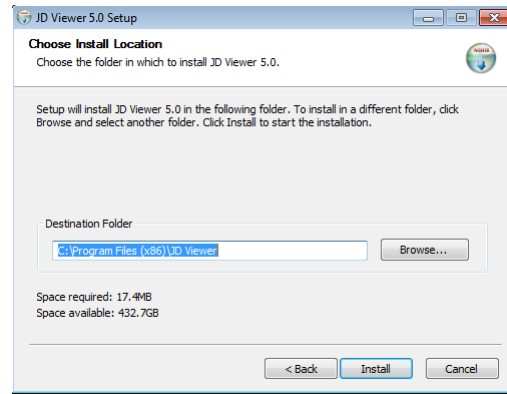
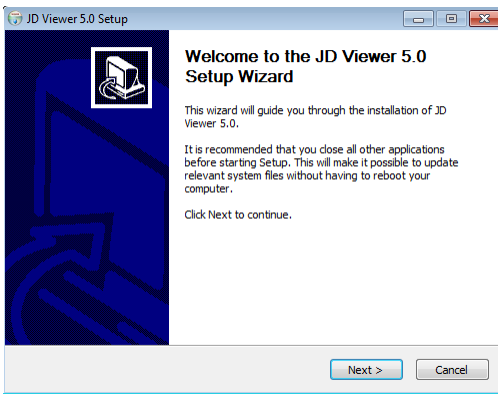
## Compatible Operating System

- Microsoft Windows XP x86 SP2 or compatible
- Windows Vista SP1 or compatible
- Windows 7 x86 / x64
- Windows 8/8.1 x86 / x64
- Windows 10 x86 / x64

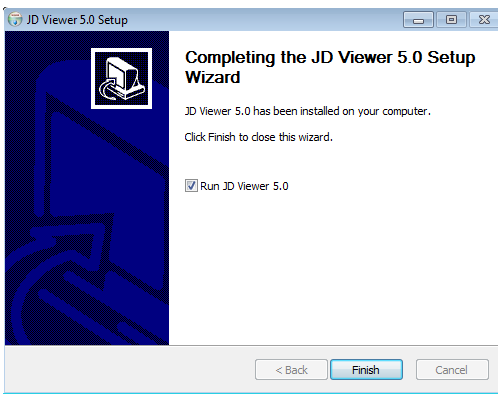
## Installation Instructions

### Application Software Installation

- Download the newest application software from the Viavi Solutions website, <http://www.viavisolutions.com/en/services-and-support/support/software-downloads-and-updates#Group-C>, and execute.



- Change installation location if required.

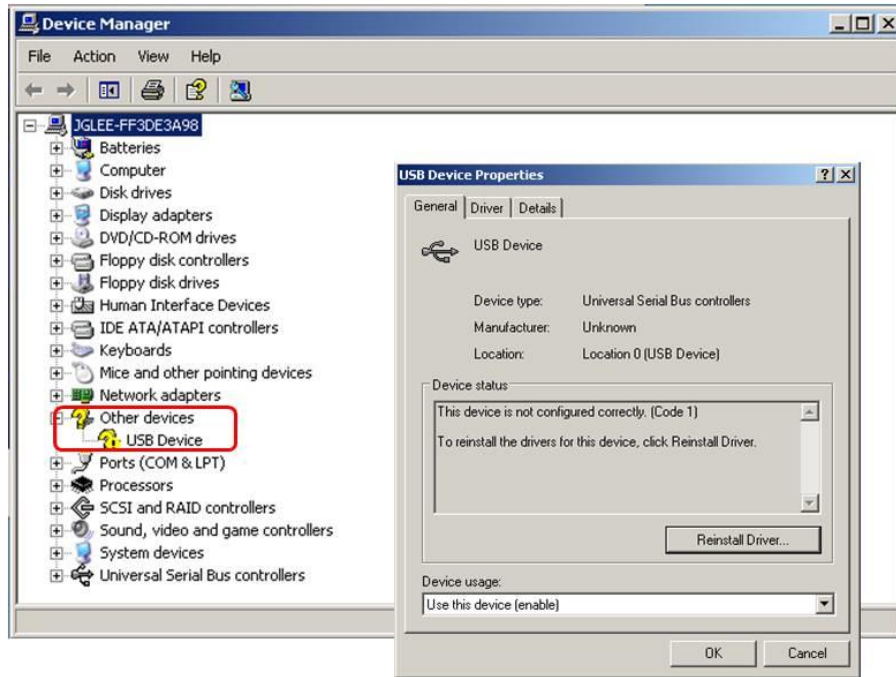


- You will be asked to update/install Microsoft .Net Framework or Microsoft Visual C++ 2008 Redistributable if your current version is outdated or missing.

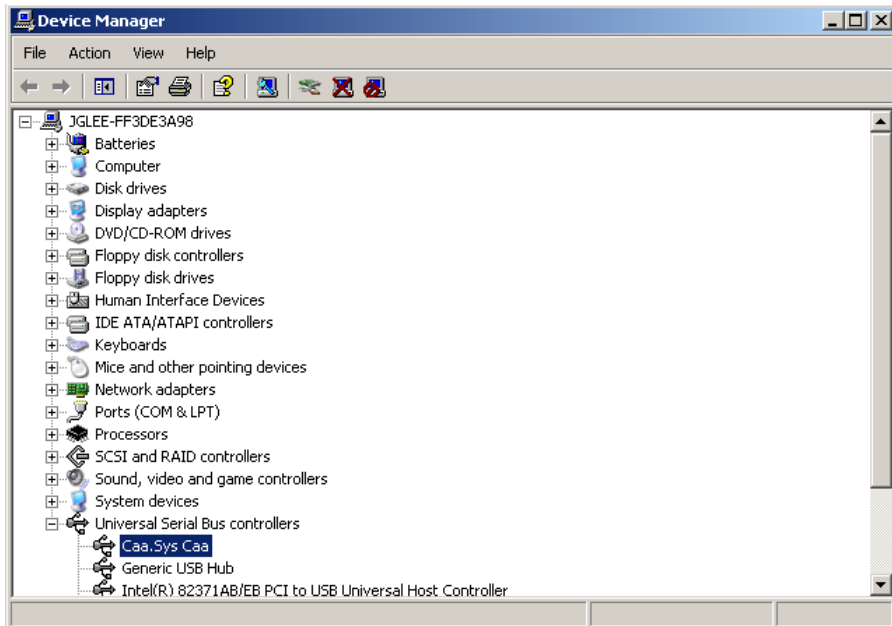
## USB Driver Installation

To use USB connection for interfacing with CellAdvisor, proper USB driver matched with your OS should be installed.

- Select the JDViewer Setup file and install the JDViewer program.
- After turning on the unit, connect the unit and computer using the USB client cable. Then, the computer starts to find the new hardware. If the computer cannot set up for the new hardware, you can check the connection in the **Control Panel-Device Manager** as a **USB Device**.
- Double click the **USB Device** and click the **Driver Update (Or install Driver)**.
- The Hardware Wizard process will be started. Then, you can find the driver files in the **Driver** folder in the **Program files – JDViewer directory**.
- When you set up the driver files, Windows XP's driver files were in the **XP folder**. And the Windows Vista and Windows 7's driver files were in the **Vista folder**. Please select the exact directory, when you select the directory to set up the driver.



- When the driver file set up, the “Other devices” would be change as “Caa.Sys.Caa” (in Windows XP.) or “GenCOMM(WDF)”(in Windows Vista or Windows 7)



# What's New in Version

## Version: 6.4

Date: May 18, 2022

### New Features

- Enhancement
  - Added Telecom Service Table that enables editing and uploading to ONA-800/CA5G
  - Added Export PCI list
  - Support for Field Strength result

### Improvement/Bug Fix

- Fixed an issue that a trace file edited in JDViewer was not loaded with saved edits
- Fixed an issue that did not display any trace after opening a JD720C DTF trace file
- Fixed an error that caused incorrect measure time display

### Known Issue/Bug

- None

### Compatible Firmware version

- JD7105B 4.085.021 or higher
- JD720B 3.045.001 or higher
- JD720C 1.042.024 or higher
- JD740A 1.111.002 or higher
- JD780A 2.120.061 or higher
- DS9000 1.051 or higher
- CA5000 5.040.028r or higher
- OneAdvisor-800 1.400.0029r or higher

# Previous Version History

## Version: 5.0

Date: July 10, 2013

### New Features

- Supportability of JD780A product family: JD785A, JD786A, and JD788A

- Language options in Help: English and Korean
- Firmware upgrade for JD780A series
  - JDViewer now can load firmware file stored in the PC and upgrade the JD780A via Ethernet or USB connection.
  - Once the JD780A received firmware from JDViewer, then it performs firmware upgrade and auto power recycling to complete the upgrade.

### Improvement/Bug Fix

- Added header information on a printed form of Auto Measure Result
  - To change the header, select **Utility: User Info: {Company} / {User} / {Logo}**
- Improved to export parameters (Cell ID, Sector ID, and Group ID) from the LTE OTA Control logging data.

### Known Issue/Bug

- While uploading firmware file to JD780A, progress bar stop updating if any mouse or key action is happened.
- Displaying incorrect unit in csv file exported from WCDMA OTA logging file was found. Unit of following parameters should be “dB” not “dBm”
  - CPICH, P-CCPCH, PHICH, P-SCH, and S-SCH

## Version: 5.1

Date: Sep. 13, 2013

### New Features

- Comparison of two Auto Measure results
- Double-click the mouse to open a data file
- Display of upgrade progress with byte information

### Improvement/Bug Fix

- Improved to have equal spacing between each grid in any case
- Exception handing for the data exceeding valid range

### Known Issue/Bug

- Fixed bug in DTF conversion that limited the data point as 512
- Fixed the error in displaying Auto Measure results
- Fixed bug that displays wrong Marker value in DTF(VSWR) chart
- Fixed inconsistent unit display in DTF where the x-axis has been saved as feet

- Fixed error in calculating trace average after DTF conversion
- Add unit in csv file export
- LTE OTA Logging Export
- Fixed error on updating limit line value in conversion between VSWR and Return loss
- VSWR -> DTF conversion Error
- Fixed error in Auto Scale in DTF VSWR

## Version: 5.2

Date: Jan. 28, 2014

### New Features

- Compatibility with Windows 8, 32/64 bits

### Improvement/Bug Fix

- Improved to have additional information included in a trace file created on JD720C:
  - GPS Info
  - Fields being required for StrataSync
  - Updated default terminologies used for subtitle

### Known Issue/Bug

- Fixed Max D of DTF in JDViewer to be compatible with JD720X
- Fixed to update the Limit value displayed at the bottom of chart upon changing at control box
- Fixed error in displaying unit of cable loss in DTF mode
- Fixed intermittent/irregular turned up of Band Marker while using

### Compatible Firmware version

- JD7105B 4.085.021 or higher
- JD720B 1.041.003 or higher
- JD720C 3.045.001 or higher
- JD740A 1.105.001 or higher
- JD780A 2.111.052 or higher

## Version: 5.3

Date: Apr. 25, 2014

### New Features

- Setting of M5 at Peak/Valley between M2 and M3, and M6 at Peak/Valley between M3

### **Improvement**

- Improved Print Page function so the users can change the order of printing.
- Add Limit Line value next to the line
- Enable to open the DTF conversion window as new
- Cable List update: AP6012J50
- Maintaining Last Save path and Last Load path separately

### **Bug Fixes**

- Fixed the bug that made a Marker label grayed-out whenever a chart was pasted on Word file
- Fixed the Printer error that happened when a Marker was activated
- Fixed the error on Reference Marker position after saving or loading
- Fixed the error that enlarged the Marker font on the Smith Chart screen
- Fixed the error on loading a 780A logging file

### **Compatible Firmware version**

- JD7105B 4.085.021 or higher
- JD720B 3.045.001 or higher
- JD720C 1.042.024 or higher
- JD740A 1.111.002 or higher
- JD780A 2.120.002 or higher

## **Version: 5.4**

Date: Dec. 9, 2014

### **New Features**

- Supportability of new products: JD725C, JD726C, JD745B, JD746B, JD748B, JD785B, JD786B, and JD788B
- Drag and drop to open a file – Dragging a file and dropping it onto JDViewer opens it.
- Drag and drop to rearrange the order of files to be printed

### **Improvement/Bug Fix**

- Fixed the bug that the Delta marker info got wrong after a trace was saved with the marker
- Fixed the error that new X-scale setting for DTF was not saved

### **Known Issue/Bug**



- None

### **Compatible Firmware version**

- JD7105B 4.085.021 or higher
- JD720B 3.045.001 or higher
- JD720C 1.042.024 or higher
- JD740A 1.111.002 or higher
- JD780A 2.120.061 or higher

## **Version: 5.5**

Date: Jan. 30, 2015

### **New Features**

- Supportability of DS9000 series

### **Improvement/Bug Fix**

- None

### **Known Issue/Bug**

- None

### **Compatible Firmware version**

- JD7105B 4.085.021 or higher
- JD720B 3.045.001 or higher
- JD720C 1.042.024 or higher
- JD740A 1.111.002 or higher
- JD780A 2.120.061 or higher
- DS9000 1.051 or higher

## **Version: 5.6**

Date: April 20, 2015

### **New Features**

- Supportability of RFoCPRI Logging file

### **Improvement/Bug Fix**

- None

### **Known Issue/Bug**

- None

### **Compatible Firmware version**

- JD7105B 4.085.021 or higher
- JD720B 3.045.001 or higher
- JD720C 1.042.024 or higher
- JD740A 1.111.002 or higher
- JD780A 2.120.061 or higher
- DS9000 1.051 or higher

## **Version: 5.7**

Date: July 15, 2015

### **New Features**

- Supportability of Internet Protocol version 6 (IPv6)

### **Improvement/Bug Fix**

- Improved the Save feature to allow users to enter a file name up to 96 bytes
- Fixed the error in loading a `.grr` file that was saved in RFoOBSAI testing
- Improved saved file is loaded one application when user double-clicked files on Windows Explorer.
- Improved the order of print sequentially that user opened saved files.

### **Known Issue/Bug**

- None

### **Compatible Firmware version**

- JD7105B 4.085.021 or higher
- JD720B 3.045.001 or higher
- JD720C 1.042.024 or higher
- JD740A 1.111.002 or higher
- JD780A 2.120.061 or higher
- DS9000 1.051 or higher

## Version: 5.8

Date: October 20, 2015

### New Features

- None

### Improvement/Bug Fix

- Fixed the error that caused the inconsistent display of Codogram in historical and snapshot views.

### Known Issue/Bug

- None

### Compatible Firmware version

- JD7105B 4.085.021 or higher
- JD720B 3.045.001 or higher
- JD720C 1.042.024 or higher
- JD740A 1.111.002 or higher
- JD780A 2.120.061 or higher
- DS9000 1.051 or higher

## Version: 5.9

Date: November 23, 2017

### New Features

- USB driver auto installation
- Batch conversion of \*.tra into \*.csv or \*.bmp

### Improvement/Bug Fix

- Added 2 Port Transmission to the mode drop-down list in MSL editor
- Fixed the error in loading a .grr file that was saved while testing BBU Emulation.
- Fixed the error for GPS coordinates display.
- Fixed the error in printing loaded trace files on Windows 10.
- Fixed the error in CAA trace files when operating an image copy event.
- Fixed the error in exporting a route map file to a CSV file.

### **Known Issue/Bug**

- None

### **Compatible Firmware version**

- JD7105B 4.085.021 or higher
- JD720B 3.045.001 or higher
- JD720C 1.042.024 or higher
- JD740A 1.111.002 or higher
- JD780A 2.120.061 or higher
- DS9000 1.051 or higher

## **Version: 6.0**

Date: July 19, 2018

### **New Features**

- Supportability of exporting KML file using CA5000 route map file.

### **Improvement/Bug Fix**

- None

### **Known Issue/Bug**

- None

### **Compatible Firmware version**

- JD7105B 4.085.021 or higher
- JD720B 3.045.001 or higher
- JD720C 1.042.024 or higher
- JD740A 1.111.002 or higher
- JD780A 2.120.061 or higher
- DS9000 1.051 or higher
- CA5000 5.001.022r or higher

## **Version: 6.1**

Date: Aug 21, 2019

### **New Features**

- Supportability of Loading CA5000 CAA Trace file.

### **Improvement/Bug Fix**

- Added JPG PNG of Export and Batch Conversion.

### **Known Issue/Bug**

- None
- 

### **Compatible Firmware version**

- JD7105B 4.085.021 or higher
- JD720B 3.045.001 or higher
- JD720C 1.042.024 or higher
- JD740A 1.111.002 or higher
- JD780A 2.120.061 or higher
- DS9000 1.051 or higher
- CA5000 5.040.028r or higher

## **Version: 6.2**

Date: Dec 1, 2020

### **New Features**

- Supportability of CA5000 result files.
  - NSA Route Map gomv file conversion into Google Maps and Google Earth
  - DSS Route Map gomv file conversion into Google Maps and Google Earth
  - Trace file of Sweep Tuned Spectrum
  - CSV file of 5GNR Channel Power
- Additional information added to a converted CSV file
  - Windowing
  - Limit

### **Improvement/Bug Fix**

- Fixed an issue that incorrectly cropped a DTF trace that its setting includes a decimal point

### **Known Issue/Bug**

- None

### **Compatible Firmware version**

- JD7105B 4.085.021 or higher
- JD720B 3.045.001 or higher
- JD720C 1.042.024 or higher
- JD740A 1.111.002 or higher
- JD780A 2.120.061 or higher
- DS9000 1.051 or higher
- CA5000 5.040.028r or higher
- OneAdvisor-800 1.400.0029r or higher

## **Version: 6.3**

Date: Mar 08, 2021

### **New Features**

- None

### **Improvement/Bug Fix**

- Fixed an error in exporting 5GNR Route Map results
- Fixed a bug that displays incorrect marker and frequency values in the trace chart
- Fixed an issue that the main and sub titles manually entered are not applied properly

### **Known Issue/Bug**

- None

### **Compatible Firmware version**

- JD7105B 4.085.021 or higher
- JD720B 3.045.001 or higher
- JD720C 1.042.024 or higher
- JD740A 1.111.002 or higher
- JD780A 2.120.061 or higher
- DS9000 1.051 or higher
- CA5000 5.040.028r or higher
- OneAdvisor-800 1.400.0029r or higher